



# RETAIL-RESTAURANT PAD SITE AVAILABLE

Excellent Interstate 29/45 Highway Ground Lease Site  
I-29 & NW 64th Street (SWC), Kansas City, Missouri



## LEASE RATE: \$110,000/YEAR | 1.39 ACRES

### DEMOGRAPHICS

	1 mile	3 miles	5 miles
Estimated Population	12,035	64,904	140,922
Avg. Household Income	\$104,748	\$110,745	\$113,241

- Across from HyVee and CVS and next to McDonald's , Wendy's, Aldi, Planet Fitness, Woodsprings Suites, and more
- Lot 6: 1.39 acres
- Located off of I-29 & NW 64th Street with superb visibility
- One of the city's last remaining available retail intersections
- I-29 & NW 64th Street carries over 111,000 cars per day and is the main route to the National Golf Course
- Zoned B3-3



CLICK HERE TO VIEW MORE LISTING INFORMATION

For More Information Contact:

TONY DETOMMASO | 816.412.7308 | [tdetommaso@blockandco.com](mailto:tdetommaso@blockandco.com)

DAVID BLOCK | 816.412.7400 | [dblock@blockandco.com](mailto:dblock@blockandco.com)

Exclusive Agents







# RETAIL-RESTAURANT PAD SITE AVAILABLE

Excellent Interstate 29/45 Highway Ground Lease Site  
I-29 & NW 64th Street (SWC), Kansas City, Missouri

## SURROUNDING TENANTS









# RETAIL-RESTAURANT PAD SITE AVAILABLE

Excellent Interstate 29/45 Highway Ground Lease Site  
I-29 & NW 64th Street (SWC), Kansas City, Missouri

AERIAL



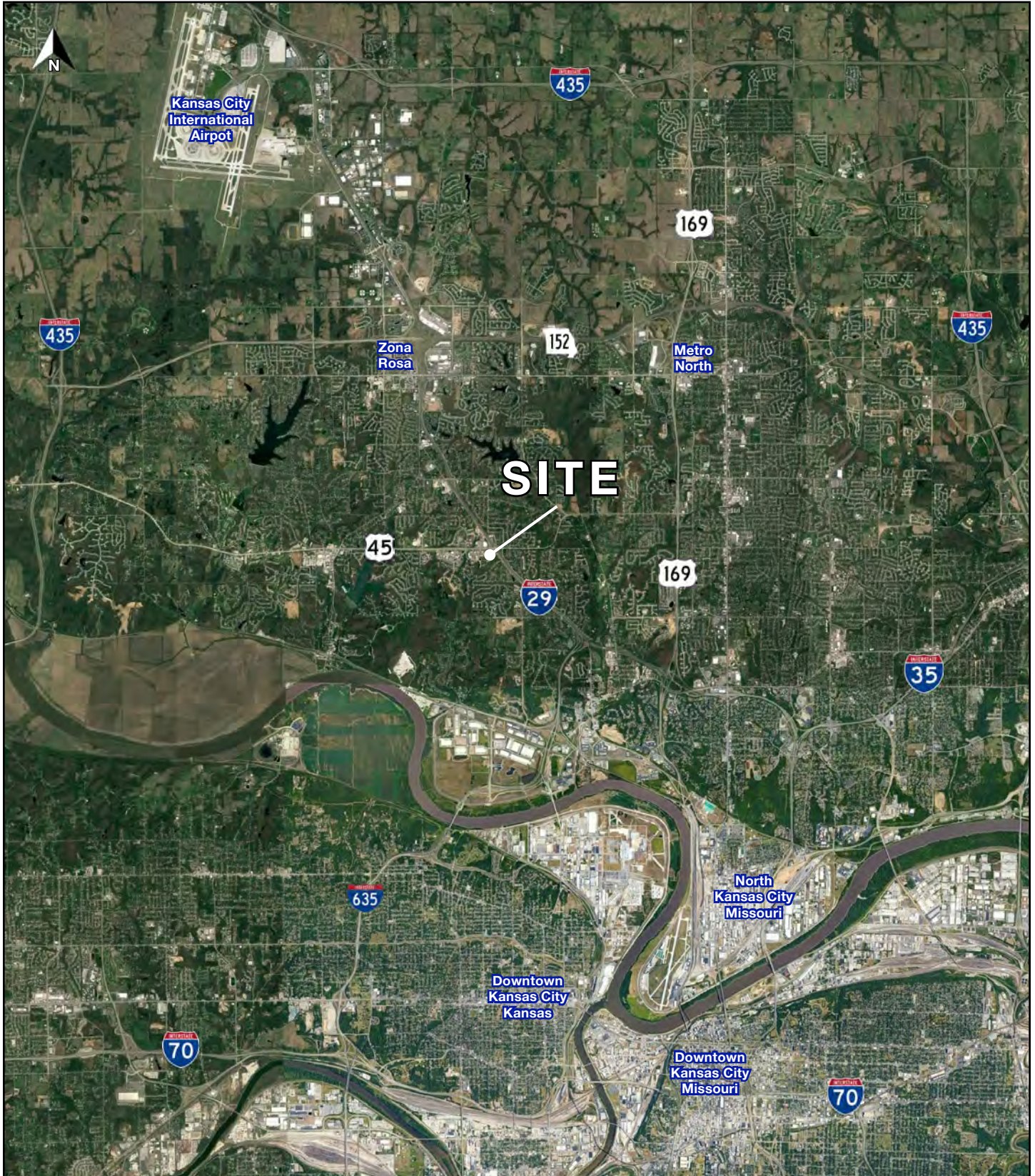




# RETAIL-RESTAURANT PAD SITE AVAILABLE

Excellent Interstate 29/45 Highway Ground Lease Site  
I-29 & NW 64th Street (SWC), Kansas City, Missouri

## REGIONAL AERIAL

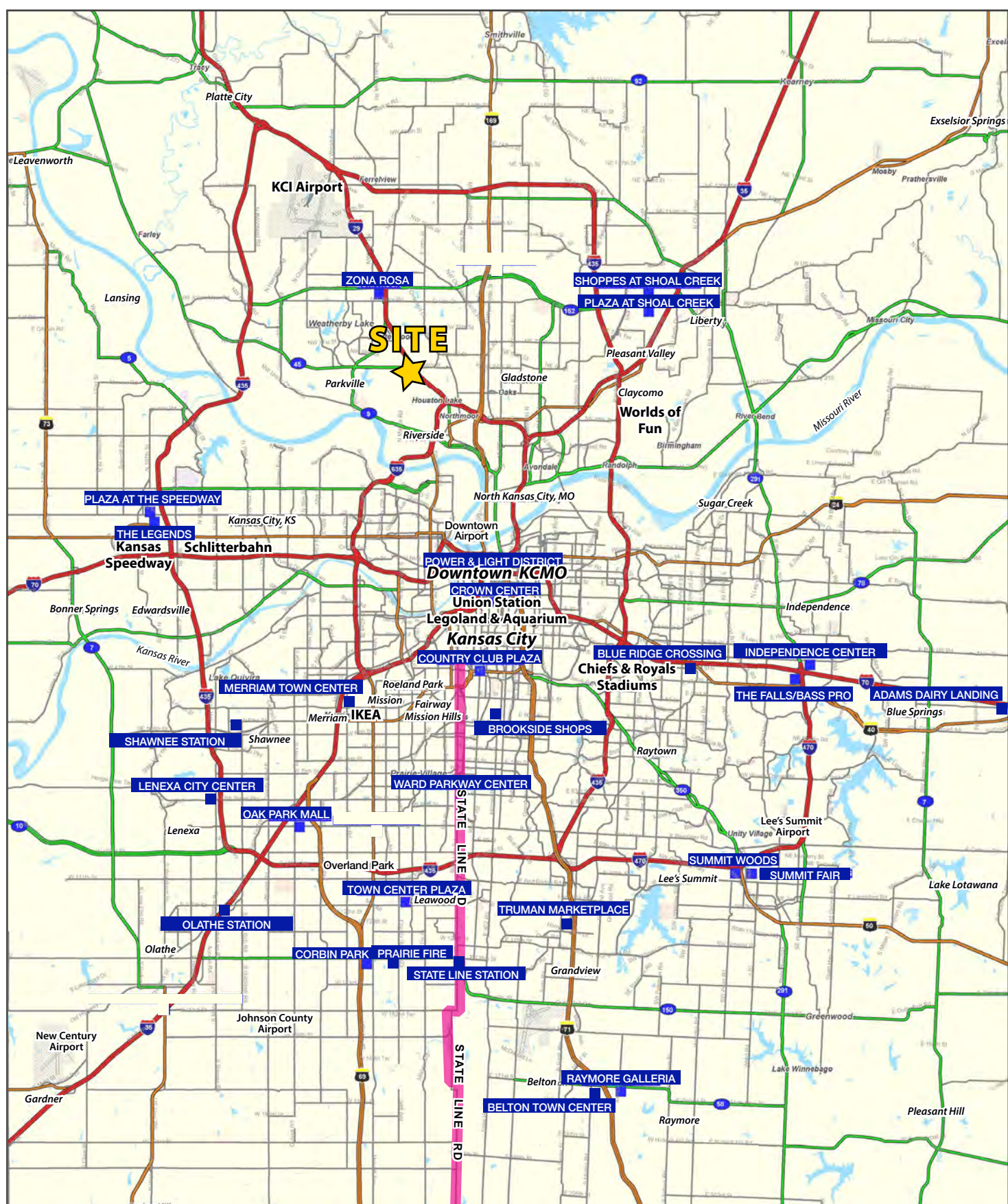






# RETAIL-RESTAURANT PAD SITE AVAILABLE

Excellent Interstate 29/45 Highway Ground Lease Site  
I-29 & NW 64th Street (SWC), Kansas City, Missouri



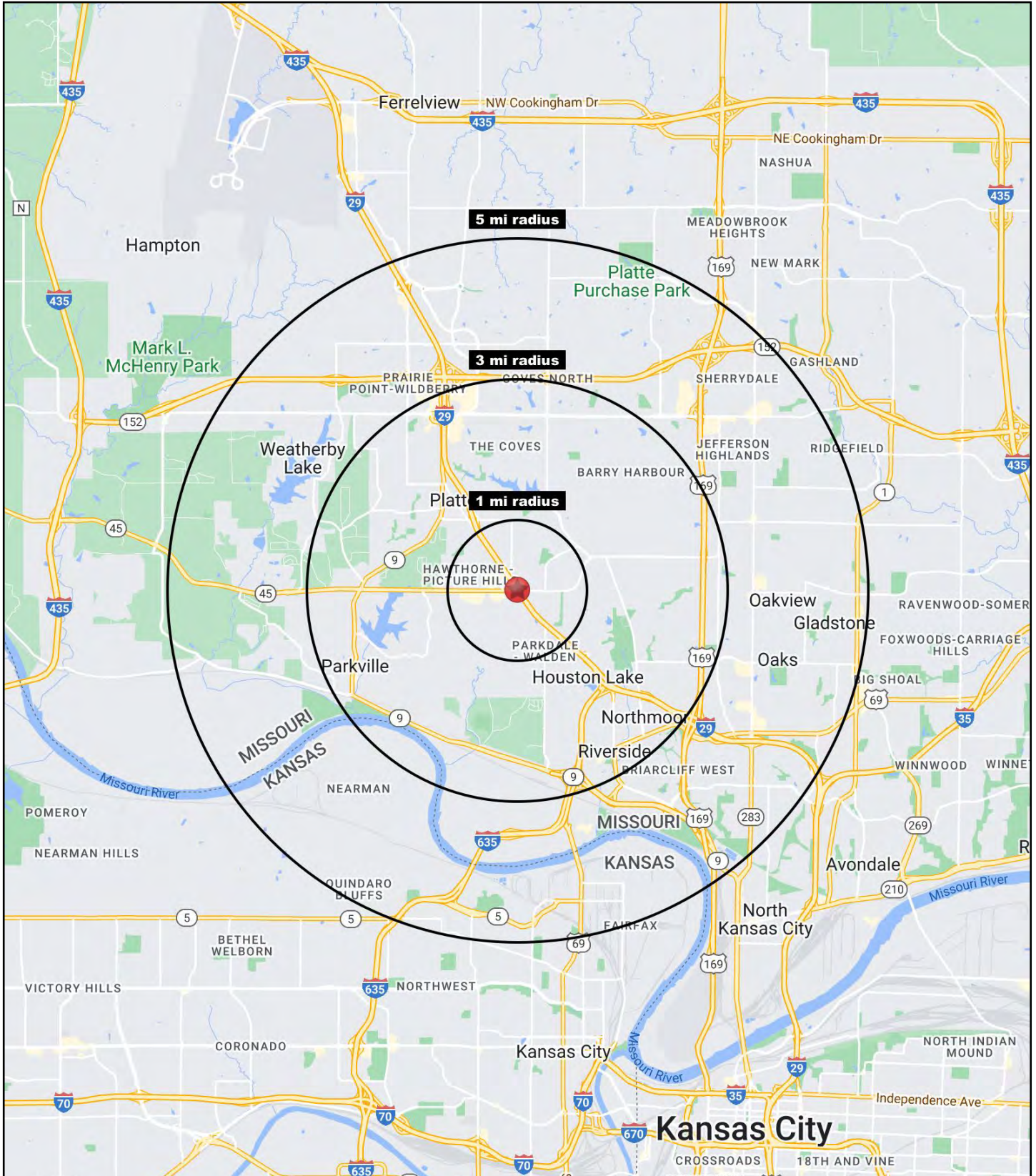
All information furnished regarding property for sale or lease is from sources deemed reliable, but no warranty or representation is made as to the accuracy thereof and the same is subject to errors, omissions, changes of prices, rental or other conditions, prior sale or lease or withdrawal without notice.





# RETAIL-RESTAURANT PAD SITE AVAILABLE

Excellent Interstate 29/45 Highway Ground Lease Site  
I-29 & NW 64th Street (SWC), Kansas City, Missouri





# RETAIL-RESTAURANT PAD SITE AVAILABLE

## Excellent Interstate 29/45 Highway Ground Lease Site

### I-29 & NW 64th Street (SWC), Kansas City, Missouri

Interstate 29 & NW 64th Street	1 mi radius	3 mi radius	5 mi radius
<b>Kansas City, MO 64151</b>			
<b>Population</b>			
2023 Estimated Population	12,035	64,904	140,922
2028 Projected Population	13,547	69,011	150,529
2020 Census Population	11,270	63,173	136,307
2010 Census Population	8,371	54,776	118,882
Projected Annual Growth 2023 to 2028	2.5%	1.3%	1.4%
Historical Annual Growth 2010 to 2023	3.4%	1.4%	1.4%
2023 Median Age	39.6	37.1	38.1
<b>Households</b>			
2023 Estimated Households	5,110	27,003	59,597
2028 Projected Households	5,895	29,472	65,096
2020 Census Households	4,750	25,940	56,982
2010 Census Households	3,580	22,850	50,076
Projected Annual Growth 2023 to 2028	3.1%	1.8%	1.8%
Historical Annual Growth 2010 to 2023	3.3%	1.4%	1.5%
<b>Race and Ethnicity</b>			
2023 Estimated White	74.9%	75.0%	74.8%
2023 Estimated Black or African American	12.4%	11.5%	11.6%
2023 Estimated Asian or Pacific Islander	4.4%	4.9%	4.4%
2023 Estimated American Indian or Native Alaskan	0.4%	0.4%	0.4%
2023 Estimated Other Races	7.9%	8.2%	8.9%
2023 Estimated Hispanic	7.7%	8.2%	8.9%
<b>Income</b>			
2023 Estimated Average Household Income	\$104,748	\$110,745	\$113,241
2023 Estimated Median Household Income	\$99,881	\$90,470	\$88,083
2023 Estimated Per Capita Income	\$44,535	\$46,157	\$47,952
<b>Education (Age 25+)</b>			
2023 Estimated Elementary (Grade Level 0 to 8)	1.3%	1.5%	1.7%
2023 Estimated Some High School (Grade Level 9 to 11)	3.1%	3.1%	3.7%
2023 Estimated High School Graduate	20.9%	22.4%	23.6%
2023 Estimated Some College	20.2%	22.3%	22.7%
2023 Estimated Associates Degree Only	7.7%	8.4%	8.4%
2023 Estimated Bachelors Degree Only	29.0%	26.3%	25.1%
2023 Estimated Graduate Degree	17.8%	16.0%	14.8%
<b>Business</b>			
2023 Estimated Total Businesses	333	1,858	4,817
2023 Estimated Total Employees	1,886	20,216	50,348
2023 Estimated Employee Population per Business	5.7	10.9	10.5
2023 Estimated Residential Population per Business	36.1	34.9	29.3

©2023, Sites USA, Chandler, Arizona, 480-491-1112 Demographic Source: Applied Geographic Solutions 4/2023, TIGER Geography - RS1

